



19mm SWITCHES

BEYOND DURABLE.™

||TW ActiveTouch™
SENSORS, SWITCHES, ELECTRONIC CONTROLS

BEYOND DURABLE™

MECHANICAL SPECIFICATIONS

- Maximum Actuation Force:
Level 2 Sensitivity: < 5 lbs. (22.2 N)
ADA Compliant
- Materials: Stainless Steel (316),
Aluminum (6061) with Type II Anodization
- Mechanism: 100% Solid-state, No Moving Parts
- Operational Life: Tested +20MM cycles, -60°C to 85°C (Typical)
- Mounting Panel Thickness: 0.0625" (1.58mm) to
0.500" (12.7mm)
- Mounting Panel Thickness with oriented
Double "D" Flats: 0.090" (2.3mm) to
0.500" (12.7mm)
- Mounting: Brass Nut (15 Inch Pounds — Max),
AS568A-019 Butyl Rubber O-ring

ENVIRONMENTAL SPECIFICATIONS

- Operating Temperature Range: -40° C to +85° C (Typical)
- Storage Temperature Range: -60° C to +165° C (Typical)
- Relative Humidity: No Effect
- Ingress Protection: IP68 (submerged in 3 feet without a panel for 96 hours)
- Shock: Tested to 30g in each Axis
(drop test from 20 ft to concrete)
- Vibration: Tested at 4 hours each Axis
(actuated during vibration)
- Impact: 1kg Shock Test

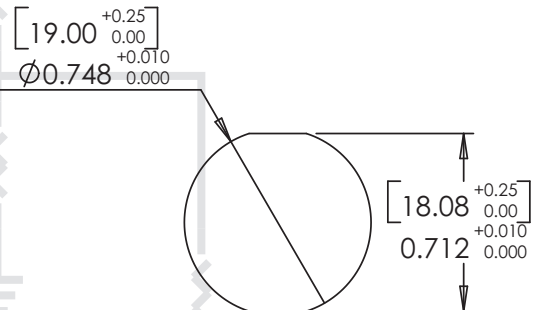
ELECTRICAL SPECIFICATIONS

- Voltage: +5 VDC ± 5%, or
+10–24 VDC
- Current: 100mA
- Contact Resistance: None
- Contact Bounce: None
- EMI/RFI: No Effect
- ESD: 25kv in each method
- Wire Leads: 24 AWG,
12" long,
105C Insulation

FUNCTIONAL OPERATION SPECIFICATIONS

- Momentary / Alternate
- Normally Open / Normally Closed
(Open Collector Output)
- Normally High, 5V / Normally Low, 0V
(Digital Output)
- Make / Break via Transistor

PANEL CUTOUTS:



800.544.3354

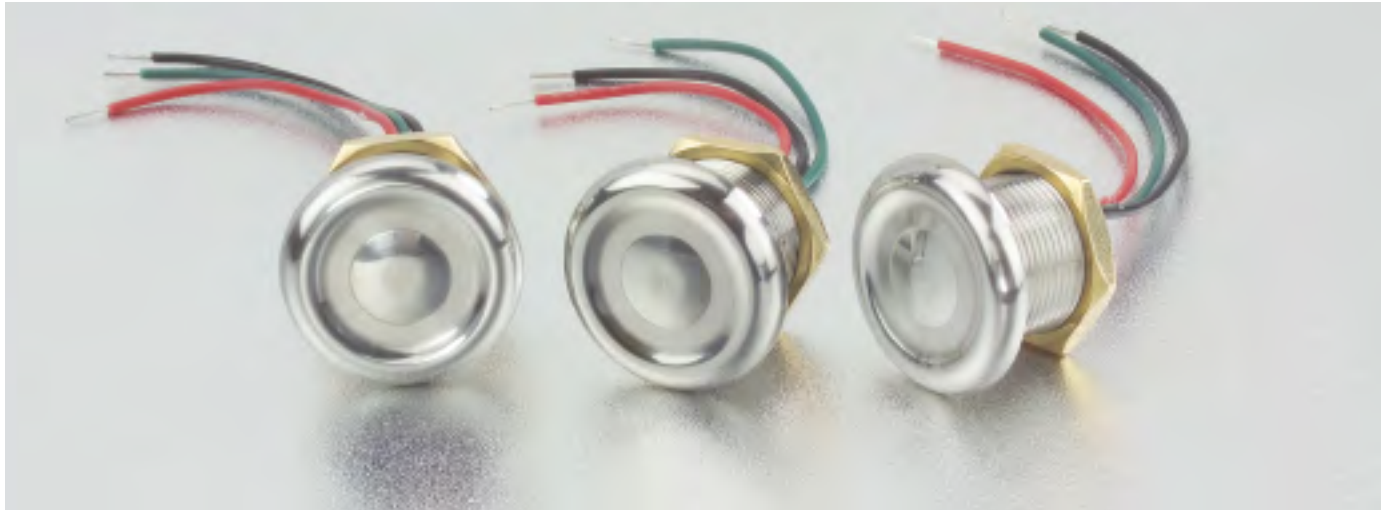
www.itwactivetouch.com

U.S. Patents: 6933932, 7026943, 7053529, 7106310.

U.S. Patents Pending: 03797865.7, 04776790.0, 04776791.8, 02761841.2, 02763786.7, 04754763.4

5 VDC Input / Digital Output

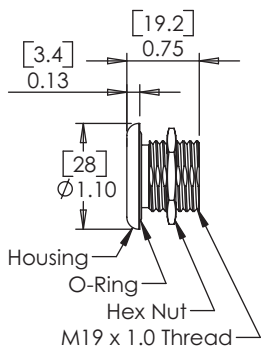
BEYOND DURABLE.™



5 VDC Input / Digital Output:

19mm Stainless Steel (316) switch with 5 VDC input and digital output. Either momentary or alternate action programmed to level 2 sensitivity. Each switch has 24 AWG, 12" long, insulated wire leads.

Part Number	Normally Open	Normally Closed	Normally High, 5V	Normally Low, 0V	Momentary Action	Alternate Action	Sensitivity Level	Color
T01-011901-001-NH-M-2		✓		✓		2	ST	
T01-011901-001-NH-A-2		✓			✓	2	ST	
T01-011901-001-NL-M-2			✓	✓		2	ST	
T01-011901-001-NL-A-2			✓		✓	2	ST	



Detailed technical information on [Input /Output](#) types, [Switch Status](#), [Switch Action](#), [Sensitivity Levels](#), and [Mounting Information](#) can be found in the [Appendix starting on page 37](#).

800.544.3354

Contact an Authorized Distributor or Factory for Pricing

www.itwactivetouch.com

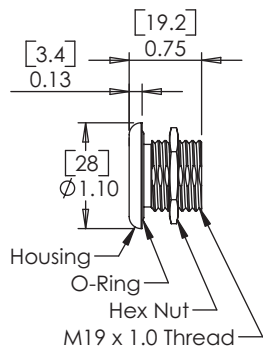
ActiveMetal™

BEYOND DURABLE™

5 VDC or 10 – 24 VDC Input / Open Collector Output

5 VDC Input / Open Collector Output:

19mm Stainless Steel (316) switch with 5 VDC input and open collector output. Either momentary or alternate action programmed to level 2 sensitivity. Each switch has 24 AWG, 12" long, insulated wire leads.

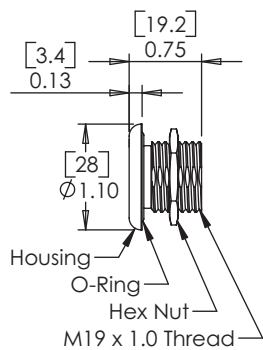


Part Number	Normally Open	Normally Closed	Normally High, 5V	Normally Low, 0V	Momentary Action	Alternate Action	Sensitivity Level	Color
T01-011902-001-NO-M-2	✓			✓		2	ST	
T01-011902-001-NO-A-2	✓				✓	2	ST	
T01-011902-001-NC-M-2		✓		✓		2	ST	
T01-011902-001-NC-A-2		✓			✓	2	ST	

Detailed technical information on [Input /Output](#) types, [Switch Status](#), [Switch Action](#), [Sensitivity Levels](#), and [Mounting Information](#) can be found in the [Appendix starting on page 37](#).

10 – 24 VDC Input / Open Collector Output:

19mm Stainless Steel (316) switch with 10–24 VDC input and open collector output. Either momentary or alternate action programmed to level 2 sensitivity. Each switch has 24 AWG, 12" long, insulated wire leads.



Part Number	Normally Open	Normally Closed	Normally High, 5V	Normally Low, 0V	Momentary Action	Alternate Action	Sensitivity Level	Color
T01-011903-001-NO-M-2	✓			✓		2	ST	
T01-011903-001-NO-A-2	✓				✓	2	ST	
T01-011903-001-NC-M-2		✓		✓		2	ST	
T01-011903-001-NC-A-2		✓			✓	2	ST	

Detailed technical information on [Input /Output](#) types, [Switch Status](#), [Switch Action](#), [Sensitivity Levels](#), and [Mounting Information](#) can be found in the [Appendix starting on page 37](#).

800.544.3354

www.itwactivetouch.com

Contact an Authorized Distributor or Factory for Pricing

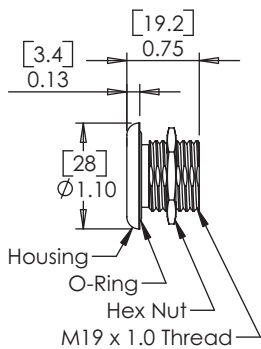
5 VDC Input / Digital Output

BEYOND DURABLE.™



5 VDC Input / Digital Output:

19mm Aluminum Alloy (6061) switch, with Type II anodization and 5 VDC input and digital output. Either momentary or alternate action programmed to level 2 sensitivity. Each switch has 24 AWG, 12" long, insulated wire leads.



Part Number	Normally Open	Normally Closed	Normally High, 5V	Normally Low, 0V	Momentary Action	Alternate Action	Sensitivity Level	Color
T01-021901-001-NH-M-2		✓		✓		2	CLR	
T01-021901-001-NH-A-2		✓			✓	2	CLR	
T01-021901-001-NL-M-2			✓	✓		2	CLR	
T01-021901-001-NL-A-2			✓		✓	2	CLR	
T01-021901-002-NH-M-2		✓		✓		2	BLK	
T01-021901-002-NH-A-2		✓			✓	2	BLK	
T01-021901-002-NL-M-2			✓	✓		2	BLK	
T01-021901-002-NL-A-2			✓		✓	2	BLK	
T01-021901-003-NH-M-2		✓		✓		2	RED	
T01-021901-003-NH-A-2		✓			✓	2	RED	
T01-021901-003-NL-M-2			✓	✓		2	RED	
T01-021901-003-NL-A-2			✓		✓	2	RED	
T01-021901-004-NH-M-2		✓		✓		2	GRN	
T01-021901-004-NH-A-2		✓			✓	2	GRN	
T01-021901-004-NL-M-2			✓	✓		2	GRN	
T01-021901-004-NL-A-2			✓		✓	2	GRN	

Detailed technical information on [Input /Output](#) types, [Switch Status](#), [Switch Action](#), [Sensitivity Levels](#), and [Mounting Information](#) can be found in the [Appendix starting on page 37](#).

800.544.3354

Contact an Authorized Distributor or Factory for Pricing

www.itwactivetouch.com

ActiveMetal™

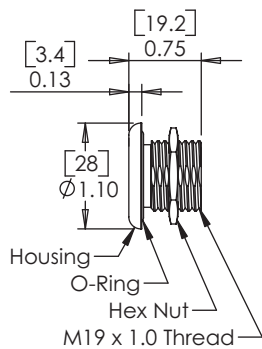
BEYOND DURABLE™

5 VDC Input / Open Collector Output



**5 VDC Input /
Open Collector Output:**

19mm Aluminum Alloy (6061) switch, with Type II anodization and 5 VDC input and open collector output. Either momentary or alternate action programmed to level 2 sensitivity. Each switch has 24 AWG, 12" long, insulated wire leads.



Part Number	Normally Open	Normally Closed	Normally High, 5V	Normally Low, 0V	Momentary Action	Alternate Action	Sensitivity Level	Color
T01-021902-001-NO-M-2	✓			✓		2	CLR	
T01-021902-001-NO-A-2	✓			✓	✓	2	CLR	
T01-021902-001-NC-M-2		✓		✓		2	CLR	
T01-021902-001-NC-A-2		✓		✓	✓	2	CLR	
T01-021902-002-NO-M-2	✓			✓		2	BLK	
T01-021902-002-NO-A-2	✓			✓	✓	2	BLK	
T01-021902-002-NC-M-2		✓		✓		2	BLK	
T01-021902-002-NC-A-2		✓		✓	✓	2	BLK	
T01-021902-003-NO-M-2	✓			✓		2	RED	
T01-021902-003-NO-A-2	✓			✓	✓	2	RED	
T01-021902-003-NC-M-2		✓		✓		2	RED	
T01-021902-003-NC-A-2		✓		✓	✓	2	RED	
T01-021902-004-NO-M-2	✓			✓		2	GRN	
T01-021902-004-NO-A-2	✓			✓	✓	2	GRN	
T01-021902-004-NC-M-2		✓		✓		2	GRN	
T01-021902-004-NC-A-2		✓		✓	✓	2	GRN	

Detailed technical information on [Input /Output](#) types, [Switch Status](#), [Switch Action](#), [Sensitivity Levels](#), and [Mounting Information](#) can be found in the [Appendix starting on page 37](#).

800.544.3354

www.itwactivetouch.com

Contact an Authorized Distributor or Factory for Pricing

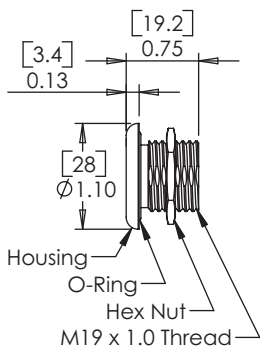
10 – 24 VDC Input / Open Collector Output

BEYOND DURABLE.™



10 – 24 VDC Input / Open Collector Output:

19mm Aluminum Alloy (6061) switch, with Type II anodization and 10–24 VDC input and open collector output. Either momentary or alternate action programmed to level 2 sensitivity. Each switch has 24 AWG, 12" long, insulated wire leads.



Part Number	Normally Open	Normally Closed	Normally High, 5V	Normally Low, 0V	Momentary Action	Alternate Action	Sensitivity Level	Color
T01-021903-001-NO-M-2	✓			✓		2	CLR	
T01-021903-001-NO-A-2	✓			✓	✓	2	CLR	
T01-021903-001-NC-M-2		✓		✓		2	CLR	
T01-021903-001-NC-A-2		✓		✓	✓	2	CLR	
T01-021903-002-NO-M-2	✓			✓		2	BLK	
T01-021903-002-NO-A-2	✓			✓	✓	2	BLK	
T01-021903-002-NC-M-2		✓		✓		2	BLK	
T01-021903-002-NC-A-2		✓		✓	✓	2	BLK	
T01-021903-003-NO-M-2	✓			✓		2	RED	
T01-021903-003-NO-A-2	✓			✓	✓	2	RED	
T01-021903-003-NC-M-2		✓		✓		2	RED	
T01-021903-003-NC-A-2		✓		✓	✓	2	RED	
T01-021903-004-NO-M-2	✓			✓		2	GRN	
T01-021903-004-NO-A-2	✓			✓	✓	2	GRN	
T01-021903-004-NC-M-2		✓		✓		2	GRN	
T01-021903-004-NC-A-2		✓		✓	✓	2	GRN	

Detailed technical information on [Input /Output](#) types, [Switch Status](#), [Switch Action](#), [Sensitivity Levels](#), and [Mounting Information](#) can be found in the [Appendix starting on page 37](#).

800.544.3354

Contact an Authorized Distributor or Factory for Pricing

www.itwactivetouch.com

ActiveMetal™