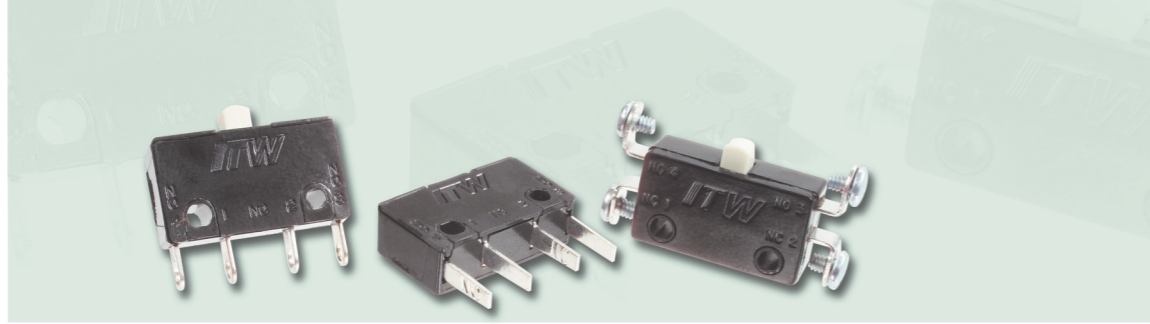


**SERIES 16:**



ACTUAL SIZE



**SUB-MINIATURE 10.1 AMP DOUBLE-BREAK SNAP ACTION SWITCHES**

Series 16 switches feature the Butterfly® double-break momentary switch mechanism. This offers the capability of handling high (or low) current loads in a small switch and gives the options of controlling two circuits with the Form Z switch circuitry.

**KEY FEATURES:**

- Gold or silver contacts
- Meets MIL-PRF-8805/7
- UL recognized and CSA certified: 10.1 amps @ 125/250 VAC
- Variety of terminal configurations and styles
- Roller lever, lever, short roller lever and bushing mount actuators are available

**APPLICATIONS**

- Lift truck seat switch
- Aircraft contactor
- Sump pump float switch
- Aircraft actuator
- Valve actuator
- Industrial equipment and machinery
- Office equipment

**ORDERING INFORMATION:**

Part Number	Circuit	Temperature Index	Contacts	Terminals	RoHS Compliant
16-104	SPDT (Form Z)	To 275°F Ambient	Silver **	End Solder	✓
16-188051	SPDT (Form Z)	To 275°F Ambient	Gold Plated	End Solder	✓
16-204	SPDT (Form Z)	To 275°F Ambient	Silver **	End Screw	—
16-304	SPDT (Form Z)	To 275°F Ambient	Silver **	Side Solder	✓
16-404	SPDT (Form Z)	To 275°F Ambient	Silver **	Bottom Solder	✓
16-40401	SPDT (Form Z)	To 275°F Ambient	Gold Plated	Bottom Solder	✓
16-4044*	SPDT (Form Z)	To 275°F Ambient	Silver **	Bottom Solder	✓
16-40441*	SPDT (Form Z)	To 275°F Ambient	Gold Plated	Bottom Solder	✓
16-488051	SPDT (Form Z)	To 275°F Ambient	Gold Plated	Bottom Solder	—
16-504	SPDT (Form Z)	To 275°F Ambient	Silver**	Bottom QC Taper Tab	✓
16-530004***	SPDT (Form Z)	To 275°F Ambient	Silver **	Bottom QC .110	✓

\* Thermoplastic case and cover. \*\* For electrical loads under 250mA, consult factory. \*\*\* Mounts easily to Series 76-95 Switches.

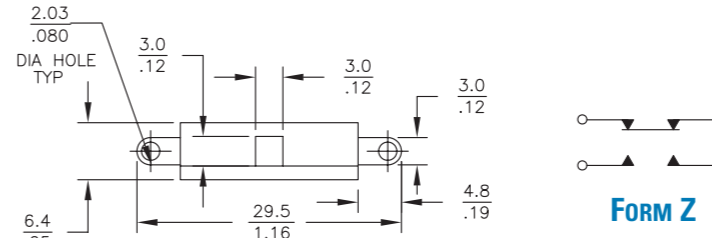
**Actuators**

Part Number	Switch Series	Oper. Force	Release Force	Pretravel	Overtravel	Movement Diff.
76-1200 Roller Lever	16	4 oz max	1 oz min	.125 max	.025 min	.045 ± .011
76-1210 Lever	16	2.5 oz max	1 oz min	.125 max	.025 min	.047 ± .013
76-1220 Short Roller Lever	16	5 + 3 oz - 2 oz min	2 oz min	.050 max	.023 min	.020 ± .005
76-22604 Bushing Mount	16	5 oz	—	.050 max	.156 MIN	—

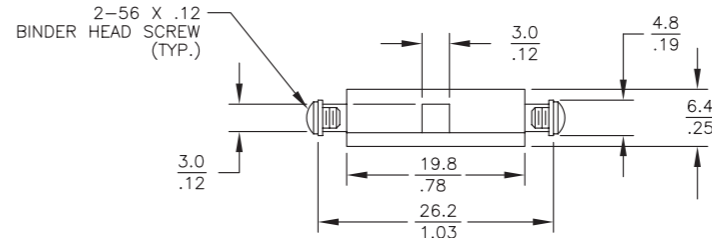
**STANDARDS / AGENCY / RATINGS:**



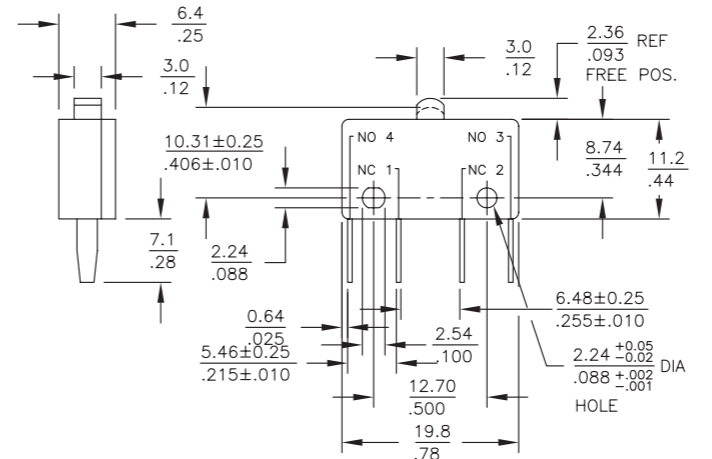
**END SOLDER**



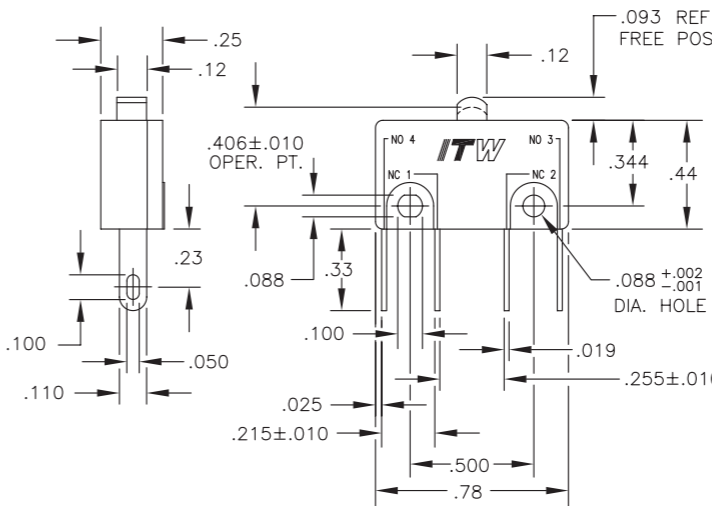
**END SCREW**



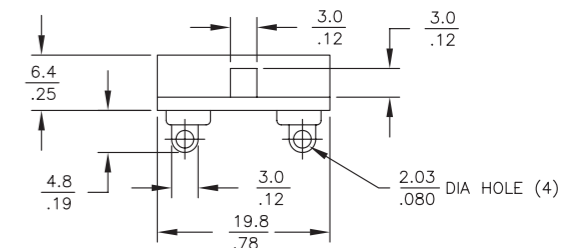
**QC TAPER TAB**



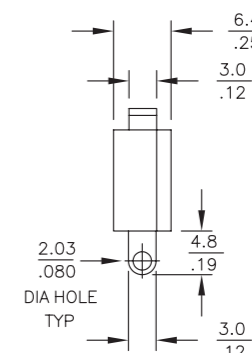
**BOTTOM QC .110**



**SIDE SOLDER**



**BOTTOM SOLDER**



**MECHANICAL / ELECTRICAL CHARACTERISTICS:**

- Pretravel:** 0.050 inches max
- Overtravel:** 0.012 inches min
- Operating Force:** 5 oz + 3 oz - 2 oz
- Release Force:** 2 oz min
- Movement Differential:** 0.020 inches ± 0.005
- Operating Point:** 0.406 inches ± 0.010 (from mounting hold centers)
- Circuit:** SPDT-DB (Form Z)
- Temperature Index:** -54°C to +135°C (-65°F to +275°F)
- MIL-PRF-8805/7 QPL listed:** 16-188051 MS25476-1, 16-488051 MS27217-1
- Electrical Rating @ 28VDC:**

	Sea Level	70,000 Feet
Form Z 2 Circuit	Res	10A
	Ind*	5A
	Lamp	3A

\*L/R = .026