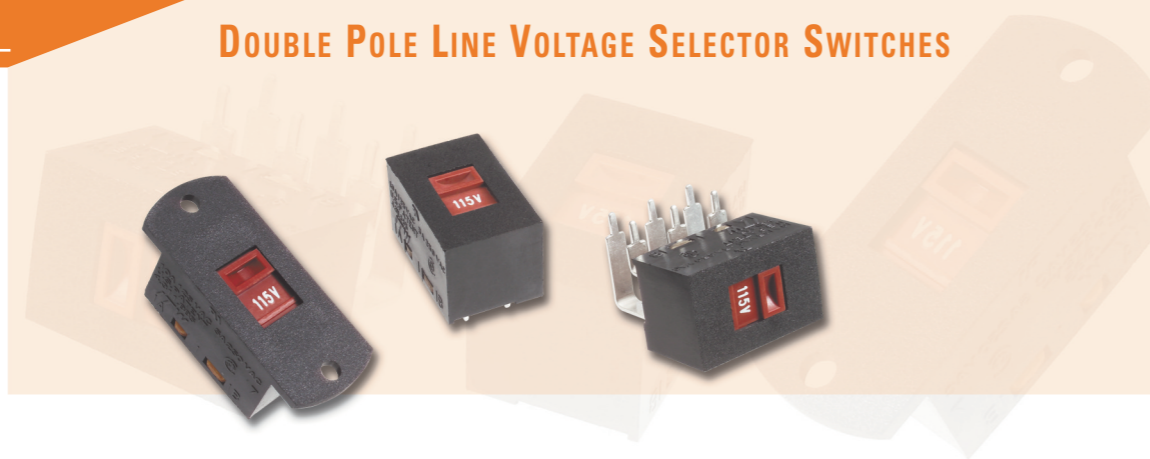


SERIES SE1022:



ACTUAL SIZE



DOUBLE POLE LINE VOLTAGE SELECTOR SWITCHES

This rugged fully enclosed housing is built for tough applications. The positive detent action, status indication and variety of contact configurations make this series ideal for a variety of needs.

KEY FEATURES:

- Status indication: variety of markings available
- UL recognized and CSA certified and SEV, VDE approved
- Variety of terminal styles
- Variety of mounting styles
- Electrical life: 10,000 cycles
- Silver plated contacts

ORDERING INFORMATION:

Part Number	Terminals	Dimensions	Marking
18-000-0016	.110 quick connect	1.615 L x .650 W x .625 H	230V/115V
18-000-0019	Right angle	1.030 L x .650 W x .625 H	230V/115V
18-000-0022	PC	1.030 L x .650 W x .625 H	230V/115V
18-000-0040	.110 quick connect	Snap in: .677 x 1.240 Cut out *	230V/115V

* It is recommended that panel thickness range from .015" to .125" (.038 to 3.18 mm) with switch cut-out punched from front of panel.

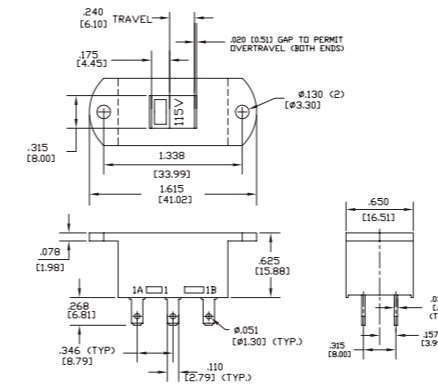
APPLICATIONS

- Consumer power supplies
- Lower cost dual use power supplies

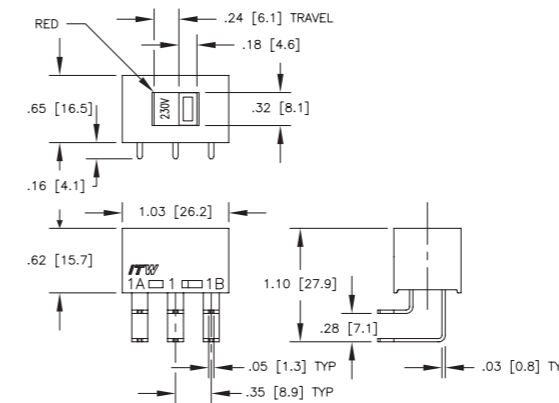
STANDARDS / AGENCY / RATINGS:



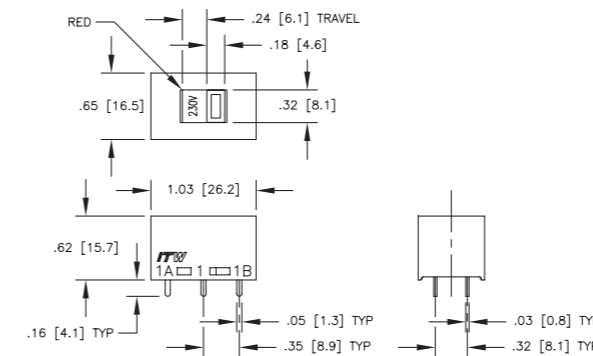
18-000-0016



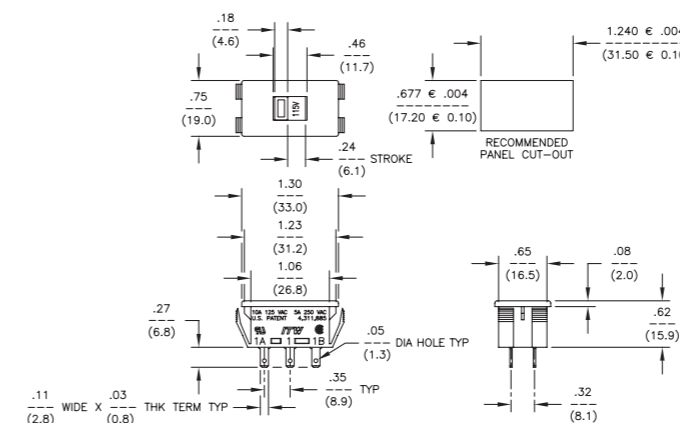
18-000-0019



18-000-0022



18-000-0040



Copyright © 2008 ITW Switches 01/08

Designs and specifications are subject to change without notice due to product improvement.

MECHANICAL / ELECTRICAL CHARACTERISTICS:

- Circuit:**
DPDT
- Electrical life:**
10,000 cycles
- Housing/actuator:**
Nylon 94 V0
- Terminal base:**
phenolic laminate
- Terminals:**
silver plated copper
- Electrical ratings:**

Circuitry	Current	Voltage
DPDT*	10 Amp	125 VAC
DPDT*	5 Amp	250 VAC
DPDT**	10 Amp	125 VAC-T85
DPDT**	5 Amp	250 VAC-T85

* UL, CSA, and SEV recognized
** VDC recognized